



Outline



BUILDING STRONG

- National Perspective
- Civil Works Business Intelligence
- Dredging Information System
- Notice to Navigation Interests



ACHIEVE OUR VISION

Anticipate future conditions; take actions today to always be ready come what may.

USACE: STAYING WORLD CLASS NOW AND INTO THE FUTURE



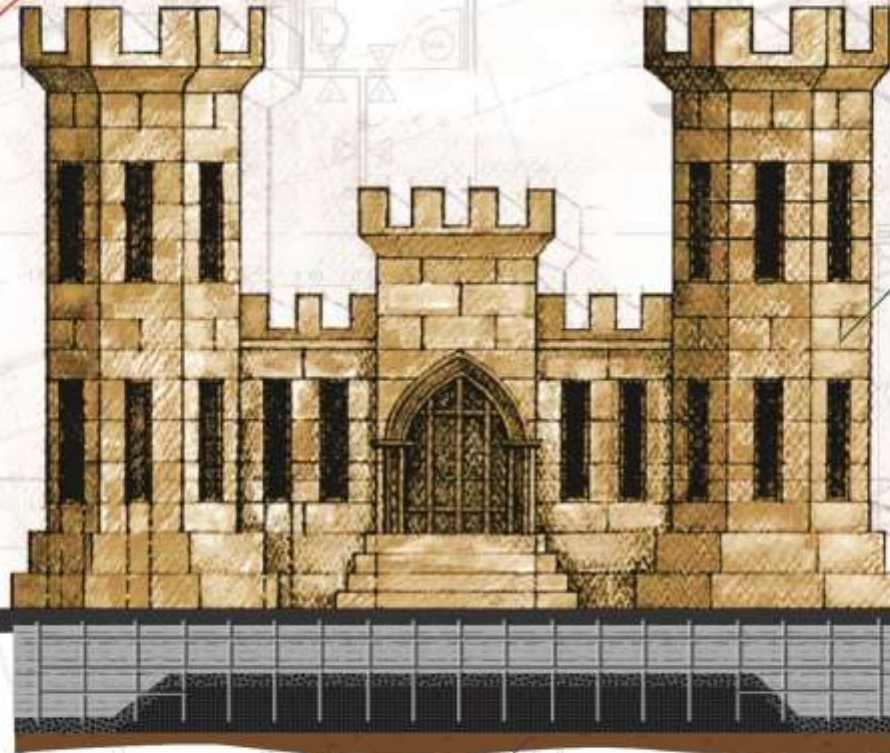
US Army Corps of Engineers



STRONG

USACE VISION

Engineering Solutions for the Nation's Toughest Challenges



DELIVER THE PROGRAM

Our credibility is based on our ability to achieve desired results on time and on budget.

USACE MISSION

Deliver vital engineering solutions, in collaboration with our partners, to secure our Nation, energize our economy, and reduce risk from disaster.

STRENGTHEN THE FOUNDATION

Doing routine tasks to a high standard enables everything else. A strong foundation empowers leaders to think strategically.

MISSION AREAS

- Military Programs
- Civil Works
- Geospatial Support
- Contingency Operations
- Research and Development

We aspire to remain a WORLD-CLASS organization, now and into the future, by setting the professional standard and stepping-up as a reliable Federal option. Perhaps the MOST STRATEGIC thing we can do is to simply DELIVER OUR PROGRAM...with exceptional quality, on time, and on budget.



USACE Navigation Mission



BUILDING STRONG

Provide safe, reliable, efficient, effective and environmentally sustainable waterborne transportation systems for movement of national security needs, commerce, and recreation.



Enterprise Schedule Coordination

Communication and Transparency

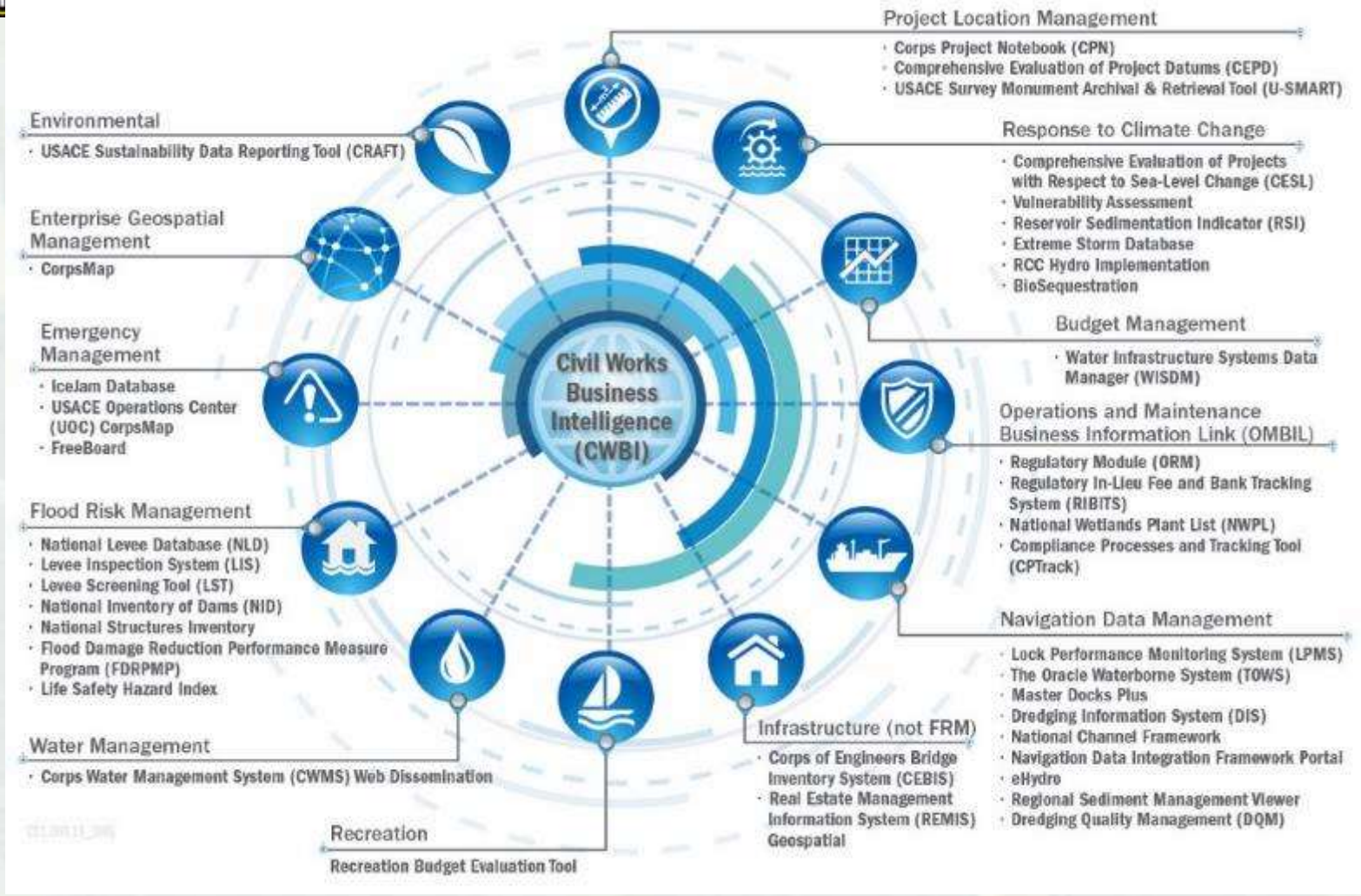
Trusted Partners Delivering Value, Today and Tomorrow



Civil Works Business Intelligence (CWBI)



STRONG





CWBI



BUILDING STRONG

- What is it?
 - ▶ An effort to integrate existing data sets and systems to provide a holistic visual display of Corps assets across the US to better inform decision making and predict impacts to infrastructure
- How?
 - ▶ Leveraging existing national datasets as a starting point and extending technology investments in CorpsMap and CWMS could accelerate the time to make this concept operational.



DIS Overview and Relevance



BUILDING STRONG

- History...
 - The Dredging Information System (DIS) is the USACE national database for all dredging data
 - DIS has been in use for over 25 years
 - EP 1130-2-520, Navigation and Dredging Operations and Maintenance Guidance and Procedures
- Today...
 - DIS is the system of record that captures a wealth of information including project name, quantity of dredged material, type of dredge, method of disposal or placement, government estimate, winning bid and bidder, and small business status.
 - Used to meet WRDA 2016 reporting requirements



Other Corps Dredging Data



BUILDING STRONG

- Other Corps systems have been developed to capture Geospatial Information relating to...
 - Where dredging is taking place
 - Location and capacity of disposal sites
 - Ways to more efficiently use material to provide the highest benefit
- Other sources of contracting data...
 - Resident Management System (RMS) collects dredging information, entered by contractors, covering many of the same post-bid topics that are contract related or required



Creating the E-DIS Project Delivery Team



BUILDING STRONG

- Recognizing that the system does not provide internal and external stakeholders with everything that's needed, this effort is intended to create a group of dredging experts to identify what information is needed to complete the mission
- Idea first arose after discussions of a 5 year national dredging schedule in July 2018
- After assigning members for the PDT, the kickoff meeting outlining the effort took place in September 2018 and includes both Corps and Industry stakeholders



E-Dis PDT purpose



BUILDING STRONG

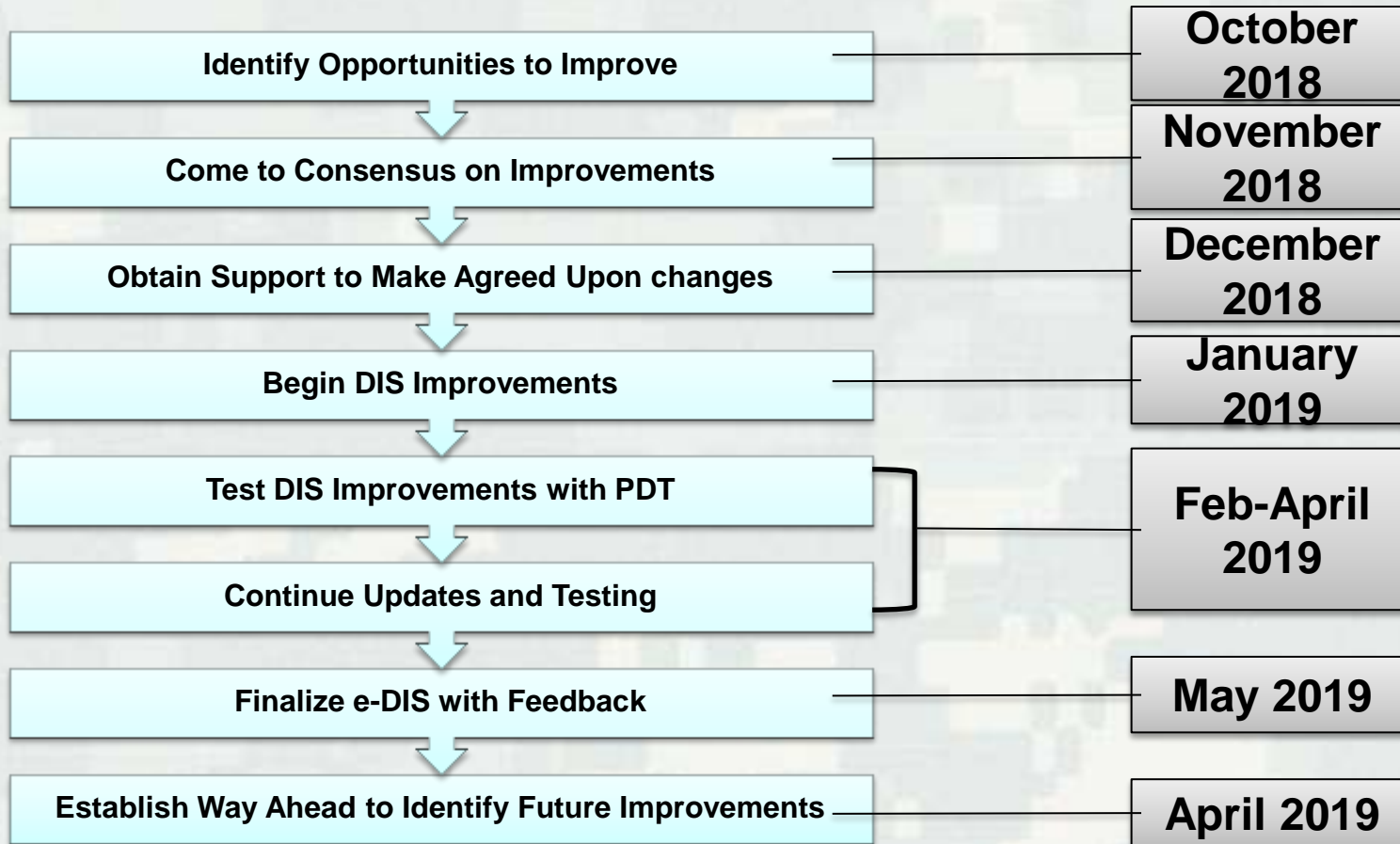
- 1 Summarize issues and opportunities already identified (in meetings, by email, etc.)
- 2 Gather feedback to determine whether there are additional opportunities for improvements not yet identified (subject of our next few meetings)
- 3 Explore opportunities to link or combine DIS with other existing data information systems.
- 4 Explore ways to increase frequency of data updates
- 5 Identify and develop data visualization and reporting tools for internal and external stakeholders
- 6 Identify and develop methods for utilizing DIS data to drive decision support, instead of just data collection



Milestones And Anticipated Schedule



BUILDING STRONG





What we're looking for in the PDT



BUILDING STRONG

People familiar with the DIS data entry process

People familiar with the external uses of public dredging reports

People willing to take time on a bi-weekly basis to discuss and test changes to E-DIS



U.S. ARMY

Improvement Ideas Identified to Date



BUILDING STRONG

- Linking DIS jobs to data already entered into the Resident Management System (RMS) for a reduced data entry requirement.
- Linking DIS to the Regional Sediment Management (RSM) effort to supply jobs
- Linking DIS to the CE-Dredge tool to complete the feedback loop of availability and capacity of disposal/placement sites.
- Enhancing spatial awareness of **planned** dredging jobs utilizing existing assets: allow users to enter points and polygons instead of entering a latitude/longitude in degrees, minutes, and seconds

RIBITS
Regulatory In-lieu Fee and Bank Information Tracking System

Home Concepts Search [1000] [Project Search]

Home Migration Concepts S.P. Programs S.P. Programs Under Construction Reporting Bank & S.P. Establishment Assessment Tools Credit Coordination Resource Sites Field Credits Help

Filter View

Display: 10 RIBITS District Bank S.P. Code Filter

Search: Primary Report Main All

Address Expand Name

ID	Name	Status
1000000001	Los Angeles	Approved
1000000002	New England	Pending
1000000003	Sacramento	Pending
1000000004	Los Angeles	Approved
1000000005	Los Angeles	Approved
1000000006	Los Angeles	Approved
1000000007	New England	Approved

Geographic Map

Map Tools: Home, Layers, Controls, UTM/Easting, DMS/E, Service Area

Map showing a geographical area with colored markers (red, green, yellow) indicating different data points.

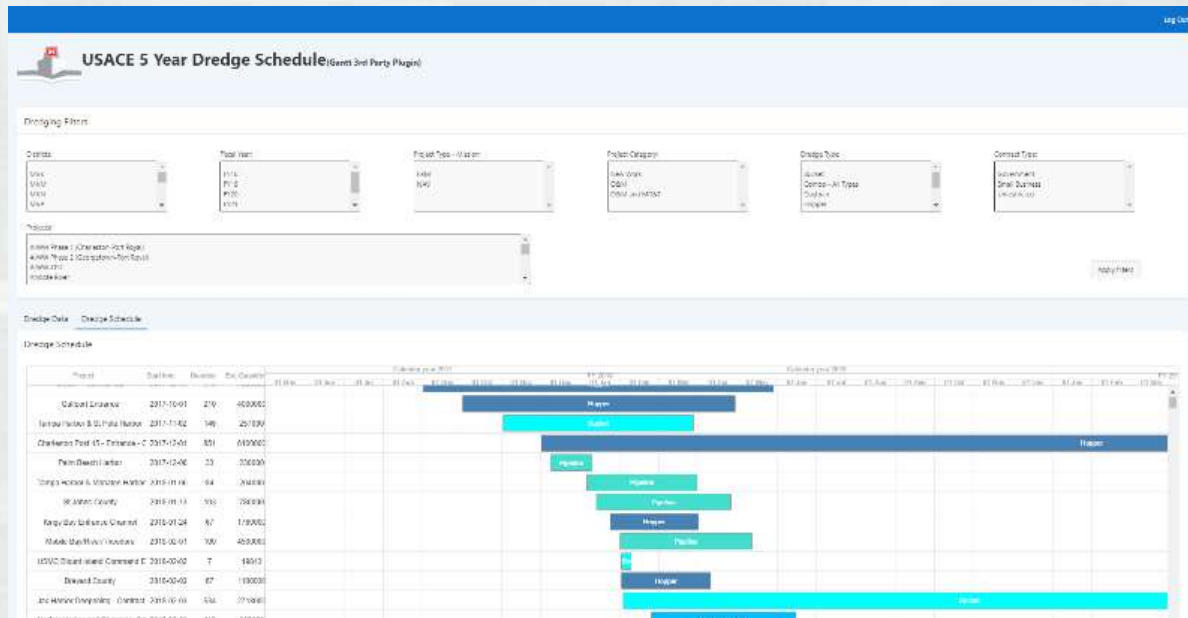


Improvement Ideas Identified to Date (Cont.)



BUILDING STRONG

- Scheduling assistance:
 - Capture all relevant dredging windows across the enterprise
 - Capture dredge inventory and associate jobs to individual dredges
 - Building out 5 year plans (replacing the spreadsheet)





More Information



BUILDING STRONG

- **Dredging information at:**
<https://www.iwr.usace.army.mil/About/Technical-Centers/NDC-Navigation-and-Civil-Works-Decision-Support/>
<http://cwbi-ndc-nav.s3-website-us-east-1.amazonaws.com/dredge.html>
- *Email: CEIWR-NDC.DIS@usace.army.mil*
- Forrest.B.Vanderbilt@usace.army.mil



Notice to Navigation Interests Overview and Relevance



BUILDING STRONG

- History...
 - The Notice to Navigation Interests (NTNI) is the USACE national database for all navigation notices
 - NTNI has been in use for the last three years
 - EP 1130-2-520, Navigation and Dredging Operations and Maintenance Guidance and Procedures
- Today...
 - NTNI is the system of record that captures information including project or waterway name, type and category of notice, timing information, attachments and POC information.
 - Used to meet Energy and Water Development Appropriations Act, 2005, requirements



NTNI Information



BUILDING STRONG

Appendix E of EP 1130-2-520

- USACE work planned/in progress, including maintenance dredging and work on jetties and breakwaters
- Deliberate modifications to channel dimensions, including reductions in maintained depths, or changes in other significant project features
- Section 10 permit work which may impact general navigation
- Change in USACE issued navigation regulations
- Special/temporary operating restrictions imposed by the USACE
- Information for correction of USACE charts
- Advance notice of USACE chart revision publication of next edition)
- Changes or corrections to NOAA-National Ocean Service-charted features

NTNI Homepage - External



Notices to Navigation Interests

<http://ntninotices.usace.army.mil>

[Navigation Notices](#) | [Policy Notices](#)

Welcome to Notices To Navigation Interest

The Notices To Navigation Interests (NTNI Notices) website contains navigation notices and policies issued by US Army Corps of Engineers Districts with a waterway navigation mission. These documents are disseminated according to EP 1130-2-520, Chapter 2, to inform mariners of information describing events that affect waterway navigation such as maintenance projects, hazards to navigation, and other pertinent information. The notices are removed from the page seven days past the end date on the latest amendment. The site also has Policy Notices that remain in place until superseded. This site does not contain all notices such as those published by other Federal agencies. Reference: The US Coast Guard Local Notice To Mariners site at: <http://www.nawcen.uscg.gov/?pageName=lmMain>

Search Criteria

Search Notice Document, Title, Waterways or Attachment Name:

Click the NTNI Nbr to Download the notice. Click any column title to Sort. Click attachment link to Download attachment.

Navigation Notices

NTNI Nbr	Amendment Nbr	Begin Date (YYYY/MM/DD)	Title	Waterways	Attachments
9222	9180-1	IMMEDIATELY	Amendment to NTNI 9180 - Dashields Lock and Dam Ohio River Mile 13.3, Main Chamber Locking Procedure	OHIO RIVER	-
9180	-	IMMEDIATELY	Dashields Lock and Dam Ohio River Mile 13.3, Primary Chamber - Revised Locking Procedure -	OHIO RIVER	-
9160	-	IMMEDIATELY	OLMSTED LOCKS AND DAM NAVIGABLE PASS RESTRICTION OHIO RIVER MILE 964.6	OHIO RIVER	M1-M2 to M6-M7 buoys and map.pdf
9100	-	IMMEDIATELY	NAVIGATION RESTRICTION Gulf Intracoastal Waterway (M.C. - P.A. ALT RTE) Port Allen Lock	GIWW ALTERNATE ROUTE	-
9076	9051-1	IMMEDIATELY	AMENDMENT - Navigation Notice 9051, MVN 18-101 GATE REPAIRS GIWW - Bayou Boeuf Lock	GULF INTRACOASTAL WW - WHL	-
8995	-	IMMEDIATELY	NAVIGATION RESTRICTIONS Gulf Intracoastal Waterway Algiers Lock	GULF INTRACOASTAL WATERWAY ALGIERS CANAL	-
8987	-	IMMEDIATELY	OPERATIONAL STATUS AND LOCK CLOSINGS ST. MARYS FALLS CANAL	ST. MARYS RIVER	-
8941	8939-1	IMMEDIATELY	AMENDMENT TO NTNI 8939 - Allegheny Lock and Dam 2 is Back in Operation	ALLEGHENY RIVER	-
8939	-	IMMEDIATELY	Allegheny Lock and Dam 2 - Out of Operation	ALLEGHENY RIVER	-
8894	-	IMMEDIATELY	Ohio River Mile 31.7, Montgomery Locks and Dam, Auxiliary Chamber Closure	OHIO RIVER	-
8491	-	IMMEDIATELY	HIGH RIVER STAGES Mississippi River Baton Rouge to Venice, La	LOWER MISSISSIPPI	-
8323	-	IMMEDIATELY	INTERMITTENT DELAYS Calcasieu River Saltwater Barrier	CALCASIEU RIVER	-
8227	-	IMMEDIATELY	LOCKING RESTRICTIONS Gulf Intracoastal Waterway Calcasieu Lock	GULF INTRACOASTAL WW - WHL	-
8226	-	IMMEDIATELY	LOCKING PROCEDURES Gulf Intracoastal Waterway Inner Harbor Navigation Canal Lock	GULF INTRACOASTAL WW - EHL	-
8225	-	IMMEDIATELY	HAZARDOUS EDDY Gulf Intracoastal Waterway Port Allen Lock	GIWW ALTERNATE ROUTE	-

[Export to CSV](#)

row(s) 1 - 15 of 268

[Next >](#)



**US Army Corps
of Engineers®**

ALASKA DISTRICT
ATTN: CEPOA-DE
2204 3RD STREET
JBER AK 99506-1518
HTTP://WWW.POA.USACE.ARMY.MIL/

NOTICE TO NAVIGATION INTERESTS

DATE: 09/05/2017
POC: Michael Tencza
Operations Project
Manager
(907) 753-2648

NOTICE NUMBER: 4679-3
LOCAL NUMBER: POA 17-04
WATERWAY: NORTON SOUND

EFFECTIVE: Immediately thru Until Further Notice

AMENDMENT - OBSTRUCTION SURVEY UPDATE
Navigation Notice 4679, POA 17-04
OBSTRUCTION
Norton Sound, Nome Harbor, Alaska

1. All navigation interests are advised of an obstruction in the outer entrance channel to Nome Harbor. The obstruction was identified during the 2015 maintenance dredging operations and confirmed by multi-beam sonar equipment during a **2017 dredge** survey. The approximate center location of the obstruction is **N64° 29' 41.378"**, **W165° 26' 11.939"** as referenced in the attached PDF drawing.
2. The shoalest depth in the vicinity of the obstruction is **-21.9** feet mean lower low water. Mariners should exercise caution while navigating this area and report any strikes to Lucas Stotts, Harbormaster (907-304-1906).
3. The approximate obstruction location is based on final survey data submitted by **Hughes & Associates** to the U.S. Army Corps of Engineers, Alaska District. The approximate dimensions of the obstruction are **4.25** feet long by **3** feet wide by **1** feet tall.
4. The obstruction was identified as a rock using an underwater camera. Reference the attached PDF drawing.
5. The Alaska District will update this notice as soon as additional information becomes available.

Questions regarding this notice may be directed to Michael Tencza, Operations Project Manager (907-753-2648) or Tom Sloan, Chief Geomatics Section (907-753-2658).

//signed//

Julie Anderson, P.E.
Chief, Operations Branch
Engineering and Construction-Operations Division



**US Army Corps
of Engineers**

ROCK ISLAND DISTRICT

ATTN: CEMVR-DE
CLOCK TOWER BLDG. - RODMAN AVE
ROCK ISLAND IL 61299
HTTP://WWW.MVR.USACE.ARMY.MIL/

NAVIGATION POLICY NOTICE

DATE: 03/13/2018

POC: Darla J. Schertz
(309) 794-5366

NOTICE NUMBER: 8570
LOCAL NUMBER: Nav 1-2018
WATERWAY: OHIO RIVER
UPPER MISSISSIPPI

EFFECTIVE: Until Superseded

ANNUAL NAVIGATION NOTICE NO. 1-2018 MVD and LRD

Mississippi Valley Division Great Lakes and Ohio River Div

"SEE ATTACHMENT for Complete Document"

INTRODUCTION:

1. As a result of partnering efforts with navigation interests, a consolidated Notice to Navigation Interests has been prepared for the Mississippi and Ohio Rivers and their tributaries. The intent is to provide consistency by replacing current district and division regulations with a joint notice that will be updated annually. The notice is applicable to the St. Paul, Rock Island, Chicago, St. Louis, Louisville, Nashville, Huntington, Pittsburgh, Memphis, Vicksburg, and New Orleans districts.
2. The basic document includes policies of general application to the described areas within the Mississippi Valley and Great Lakes and Ohio River Divisions, while the appendices cite policies applicable to certain rivers or projects. Also included as appendices as an appendix is the Code of Federal Regulations containing the "Blue Book" of navigation regulations prescribed by the Secretary of the Army.
3. Comments on how we may improve this notice may be sent to the U.S. Army Corps of Engineers, Rock Island District, Clock Tower Building, P.O. Box 2004, Rock Island, IL 61204-2004, ATTN: CEMVR-OD-Q (Darla J. Schertz), telephone (309) 794-5366 or email darla.j.schertz@usace.army.mil.

GENERAL:

1. Reference revised Regulations, 33 C.F.R. 207.300, Ohio River, Mississippi River above Cairo, Illinois, and their tributaries; use, administration, and navigation, and 33 C.F.R. 207.800, Collection of navigation statistics. These regulations contain information essential to the navigation of those waters and may be found at Appendix E and Appendix F. Copies of the above regulations may be obtained from lock operators without charge.
2. The following information is furnished in addition to the above-referenced regulations to provide guidance about the procedures, control, and management of the locks on the Mississippi River, Illinois Waterway and Ohio River System. Suggested towboat operations are also included that will enhance safety and reduce damage to Government structures, commercial vessels, and recreational craft.
3. The 2018 Inland Waterways Conference is scheduled to be held at the Hyatt French Quarter, 800 Iberville St, New Orleans, LA 70112 on March 20-21, 2018. For further information see <http://www.maritimemeetings.com/inland-waterways-conference.php>

Example NTNI - Policy



Current NTNI Updates



BUILDING STRONG

- Internal advancements
 - Migrating to Cloud
 - CAC Enabled log in (one time)
 - One button to publish

- External advancements
 - 508 Compliance
 - Linking to External Data and Partners
 - Exploring an MOU with USCG to reduce duplication of notifications
 - Harmonizing Waterway names



U.S. ARMY

Improvement Ideas Identified



BUILDING STRONG

- Enhancing spatial awareness of notices: allow users to enter points and polygons or select existing facilities along with other geographical names

Performance Based Budgeting Visualization
Civil Works Business Intelligence

Select Scenario: Lock Queue Lock Status Ports & Harbors Hydropower **Notice to Nav. Interests** Vessels Financial Subway

Morgantown Lock and Dam Monongahela River Mile 102, Seasonal Change to Operating Hours > 2016-11-25 00:00:00 to 2017-05-01 00:00:00

Navigation Notice - Lock Chamber - 7166

Download:

Navigation Notices Legend:

- ▲ Current Notice
- ▲ Upcoming Notice
- ▲ Past Notice

RIBITS
Regulatory In-lieu Fee and Bank Information Tracking System

[This Google Map] [Print] [Print on Page]

Home
Mitigation Concepts
Banks & I/F Sites
I/F Programs
Ultrasonic Instruments
Accounting
Bank & I/F Establishment
Assessment Tools
Credit Classifications
Related Sites
Final Credits
Help

Filter View

Personnel

USACE District
State
IWR Fee Allow

Reports: 1 Primary Report | View All

Actions: Expand Report

Report Name	Contract/Lot	Status
Victoria Gains & Paul Reed I/F Assessment Form	Los Angeles	Approved
Agency Selected Recommendation and Compensation Estimate	New England	Pending
Bella County I/F	Sacramento	Pending
California Water Control Compensation I/F Program	Los Angeles	Approved
Coahuila Valley 12 Lulu Fee Estimate	Los Angeles	Approved
Connecticut I/F Fee	New England	Approved

Google Map

Route | Border | Counties | USACE Districts | HUCs | Service Areas

Virginia Aquatic Resources Trust Fund CH-11 - Ferriss - VERTY

Trusted Partners Delivering Value, Today and Tomorrow



Improvement Ideas Identified



BUILDING STRONG

- Enhanced view and search functionality on the public and internal NTNI site
- Increase number of characters in field codes
- Integration/data exchange with Districts American Forces Public Information Management System (AFPIMS) websites
- Auto-populate draft notices from DIS/LPMS



More Information



BUILDING STRONG

- **Public NTNI page at:**
<http://NTNInotices.usace.army.mil>
- *Email: ceiwr-ndcntni@usace.army.mil*
- *Forrest.B.Vanderbilt@usace.army.mil*

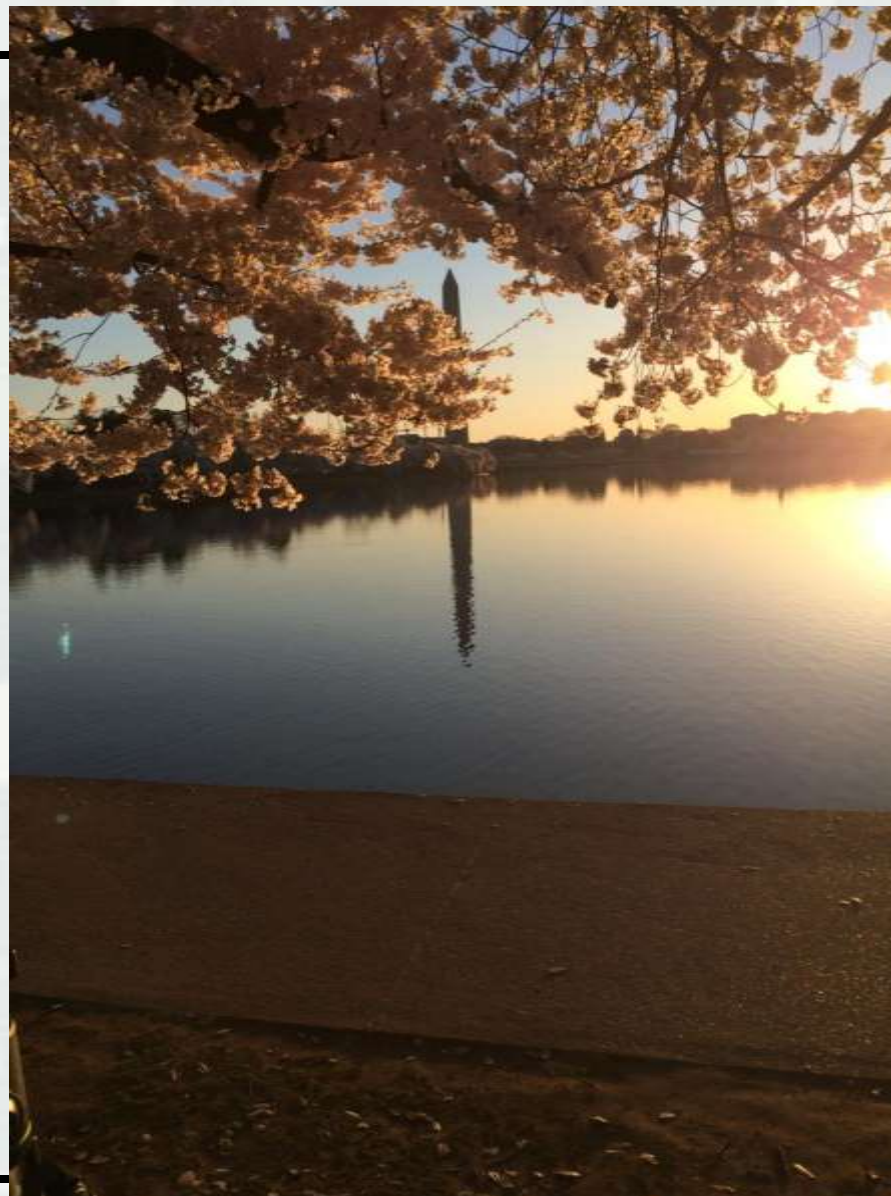


U.S. ARMY

Questions?



BUILDING STRONG



Trusted Partners Delivering Value, Today and Tomorrow